



WingMan™

An easy-to-use commercial grade plow, ideal for plow-it-yourself property managers



WingMan™

Easy from Every Angle

Incorporating a simple seven-connection wiring system, the WingMan™ plow installs in minutes. What's more, it arrives in a crate fully assembled, saving even more valuable time.

Easy to Install

- Uses a class-3, 2-inch receiver mount.
- Attach/detach in minutes with the Quick Link™ mounting system.

Easy to Use

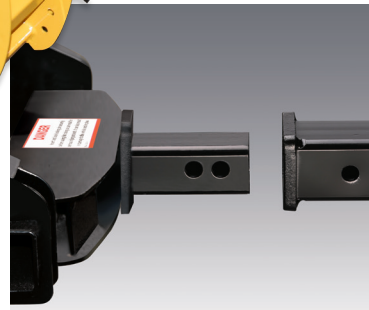
- A touch pad controller gives in-cab control of the up/down and right/left motion of the blade.
- Integrated caster wheels make it easy to maneuver and store the moldboard.
- Crank stand allows easy adjustment of the plow for no-hassle attach/detach.

Easy to Save

- Engineered using lightweight military-grade steel.
- Lighter weight means less wear and tear on your vehicle and better fuel efficiency.

Easy to Trust

- Designed for maximum durability.
- Powered by a commercial-grade hydraulic system.
- Protected from corrosion with Dura-Slick™ paint with Teflon®.



Quick Link™ mounting system for easy on/off.



Easy-to-use touch pad controller.



Caster wheels for easy maneuverability.



Top-of-the-line Nite Saber® III lights improve night vision. Commercial-grade encased hydraulic system provides responsive control.

Specifications	WingMan 6'8"
Blade type:	Full trip steel
Moldboard length:	6'8"
Moldboard height:	22"
Moldboard gauge:	14
Vertical ribs:	8
Plow trip springs:	2
Cutting edge:	3/8" x 6"
Avg. width at full angle:	72"
Angling rams:	1-1/2" x 10" (2)
Weight complete:	371 lbs

www.meyerproducts.com



18513 Euclid Ave.,
Cleveland, Ohio 44112
Phone: 216-486-1313
Fax: 216-486-1321

Meyer Products LLC reserves the right, under its continuing product improvement program, to change construction or design details, specifications and prices without notice or without incurring any obligation.

Meyer Snow Plows are protected by one or more of the following patents: 8006413, D0507999 S, D05179635, 8453358, 8695238, 7,918,042 B2, CA 2,677,509 C, D0517963 S, EP 1,989,402 B1, ES 2,346,587, 6138388, 7,591,087 B2, 7,661,211 B2, 7,793,440 B1, 8739437, 8793906, CA 2,604,085 C, 6354024, 6276075, 6,318,975 B1, 6564479, 6256909, 6594923, 6618964, 7114270, 7117617, 7290359, D399326 S, CA 2,300,012 C, CA 2,314,772 C, CA 2,331,653 C, CA 2,370,925 C, CA 2,455,637 C, CA 2,653,801 C, CA 2,654,856, EP 1,010,809, 7353628, 6153975, 6273729, CA 2,260,509 C, CA 2,282,045 C, CA 2,293,858 C, CA 2,298,243 C, 6265829, 6015219, 6005300, 6163985, 8,887,413, 9,278,645, 9,346,394, 9,205,788.